



Indemnify®

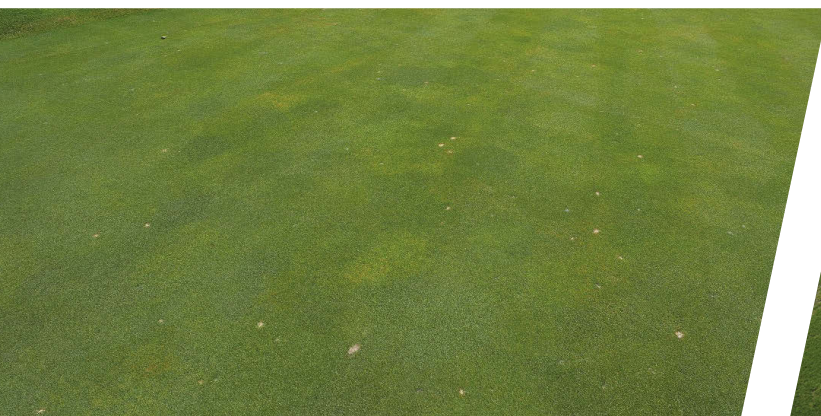
Best Management Practices

General Information

- // Indemnify controls or suppresses key plant-parasitic nematodes in turfgrass resulting in improved root growth, plant health, and performance
- // Indemnify is approved for use on all golf course areas, sod farms and sports fields, and can be applied to all turf types including bermudagrass, creeping bentgrass and annual bluegrass
- // Control may last up to 6 months depending on nematode populations and environmental conditions

Application Guidelines

- // If symptoms are seen on greens and laboratory analysis confirms problematic presence of nematodes, apply Indemnify immediately to limit further turf/root damage
- // Once nematode problems are confirmed, use Table 1 for specific timing, rate and number of applications for on-going control. Number of applications in consecutive years should be made based on turf performance and continued testing.
- // Soil wetting agents, surfactants, or fungicides are not required in the tank-mix, nor is it necessary to aerify prior to application
- // A minimum of 2 gallons of spray volume/1,000 ft² is recommended
- // Irrigate with 0.1" to 0.125" within 24 hours of application, but limit full irrigation cycle for 48 hours if possible
- // Do not apply prior to forecasted heavy rainfall and do not flush greens for salinity management for 14-21 days after application
- // Maintain standard fungicide programs for disease control to complement Indemnify applications for nematode control
- // *Anguina pacificae*-specific recommendations:
 - // Indemnify exhibits both curative and preventative control of *Anguina pacificae*
 - // For curative applications, a reduction in *Anguina* symptoms and enhancement in *Poa annua* growth, vigor and cover is typically seen 3-4 weeks after initial application as long as growing conditions are conducive for *Poa annua* recovery
 - // Do not water in application; regular nightly irrigation can be resumed 8-12 hours after Indemnify application



Early symptoms include yellowing from ring and stunt nematodes in creeping bentgrass. (Bayer)



Advanced symptoms of nematodes in creeping bentgrass if left unchecked. (Bayer)



Anguina damage in untreated plots versus Indemnify-treated plots of annual bluegrass in California. (Bayer)



Damage from sting nematodes in untreated bermudagrass (top left) versus Indemnify-treated bermudagrass. (Bayer)

Indemnify Application Programs (all applications 0.39 fl oz/1000 sq ft)

Turf type (zone)	Target nematodes	Symptoms commonly occur ¹	Timing ^{2,3}	Number of applications & interval
Cool-season turf (all zones)	All root-infecting nematodes	Summer through early fall	Apply in spring prior to summer stress and potentially again in fall if needed	Make 1-2 applications at 2-4 week interval in spring followed by up to 1 more application in fall
Warm-season grasses (Tropical and Gulf Atlantic zones)	All root-infecting nematodes	Fall through spring	First application in the fall before symptoms are expected	Make 2 applications at 2-4 week interval in fall followed by 1-2 more applications in spring at 2-4 week interval
Warm-season grasses (all other zones)	All root-infecting nematodes	Spring through early fall	Apply starting in spring prior to summer stress and potentially again in fall if needed	Make 1-2 applications at 2-4 week interval in spring followed 1-2 more applications in fall at 2-4 week interval
Overseeded <i>Poa trivialis</i> in Bermuda (Desert southwest)	All root-infecting nematodes	Fall through spring	First application in the fall 2-4 weeks after germination and before symptoms are expected	Make 1-2 applications at 4 week interval in fall
California, <i>Poa annua</i>	<i>Anguina pacificae</i>	Fall through spring	First application in the fall before symptoms are expected or when history dictates	Make 2 applications at 4 week interval in fall followed by 2 more applications in spring at 4 week interval

¹ If symptoms are present and laboratory testing indicate nematodes are the potential cause, Apply 1-2 applications of Indemnify at 0.39 fl oz/1000 ft² immediately. Curative control of nematodes with Indemnify at 0.39 fl oz/1,000 sq ft allows up to four spot applications on 10,000 sq ft/acre/year.

² In the spring, begin the first application of Indemnify when the soil temperature reaches 55-60°F (5-day average soil temperature at a 2" depth).

³ In the fall, apply in September to October prior to first frost. Consult your local area sales manager for specific timing for your region.

Comparing the Popular Nematicides

Characteristic	Indemnify®	Divanem®
Restricted Use Pesticide	No	Yes
Signal word	Caution	Warning
Off target toxicity	None on label	Fish, wildlife, bees
Additional fungicide required	No	Recommended
Surfactant or wetting agent required	No	Recommended
Post-application irrigation	Irrigate with 0.1" within 24 hours after application, return to regular irrigation cycle 24 to 48 hours after application	Irrigate prior to application, apply to wet turf, irrigate with 0.1-0.5 inches of water immediately after application.
Average soil half life	464 days	30 days
Standard program recommendations	1-4 applications	4-6 applications (including Indemnify)

www.EnvironmentalScience.Bayer.US | @BayerGolf



ALWAYS READ AND FOLLOW LABEL INSTRUCTIONS
 Bayer Environmental Science, a Division of Bayer CropScience LP, 5000 CentreGreen Way, Suite 400, Cary, NC 27513. For additional product information, call toll-free 1-800-331-2867. Not all products are registered in all states. Bayer the Bayer Cross and Indemnify are registered trademarks of Bayer. Divanem is a registered trademark of Syngenta. © 2019 Bayer CropScience LP. ES-1018-IND-513-A-R1